

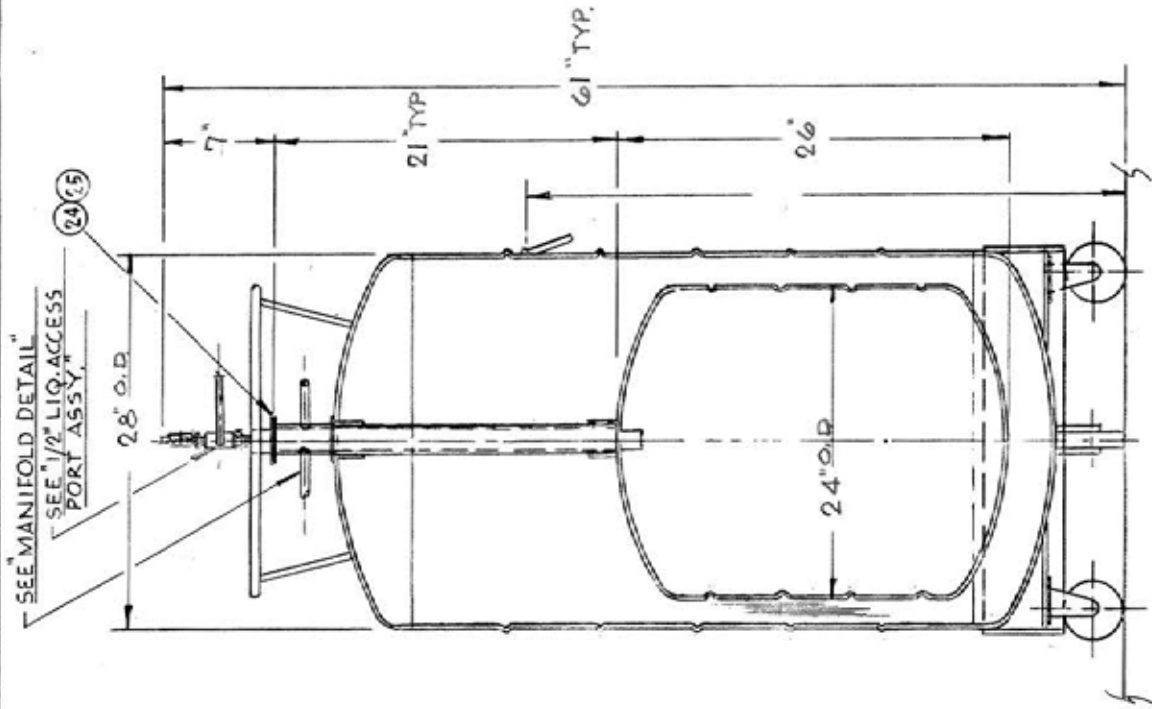
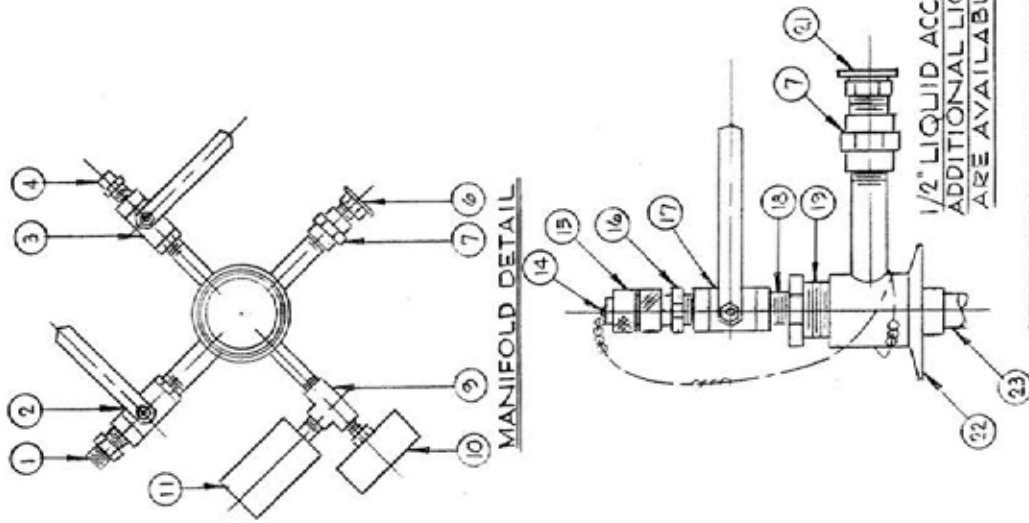


### CM5H 150 Calibration

in.	liters
1	1.2
2	4.8
3	11.0
4	18.2
5	25.5
6	32.9
7	40.2
8	47.6
9	54.9
10	62.3
11	69.6
12	77.0
13	84.3
14	91.7
15	99.0
16	106.4
17	113.7
18	121.1
19	128.4
20	135.8
21	143.1
22	150.5
23	157.7
24	163.9
25	167.4
26	168.7

cm	liters
1	0.2
2	0.7
3	1.7
4	3.0
5	4.7
6	6.7
7	9.0
8	11.7
9	14.5
10	17.4
11	20.2
12	23.1
13	26.0
14	28.9
15	31.8
16	34.7
17	37.6
18	40.5
19	43.4
20	46.3
21	49.2
22	52.1
23	55.0
24	57.9
25	60.8
26	63.7
27	66.6
28	69.5
29	72.3
30	75.2
31	78.1
32	81.0
33	83.9
34	86.8
35	89.7
36	92.6
37	95.5
38	98.4
39	101.3
40	104.2
41	107.1
42	110.0
43	112.9
44	115.8
45	118.7
46	121.6
47	123.5
48	127.4
49	130.2
50	133.1
51	136.0
52	138.9
53	141.8
54	144.7
55	147.6
56	150.5
57	153.4
58	156.2
59	158.8
60	161.2
61	163.2
62	164.9
63	166.2
64	167.1
65	167.7

PARTS LIST		
NO.	REQ.	DESCRIPTION
1	1	HEX NIPPLE, 1/2" NPT
2	1	BALL VALVE, 1/2" NPT
3	1	BALL VALVE, 1/4" NPT
4	1	RELIEF VALVE, 1/4" NPT, 1/2 PSIG
5		NOT USED
6	1	RELIEF VALVE, 1/2" NPT, 10 PSIG
7	2	COUPLING, 1/2" NPT
8		NOT USED
9	1	TEE, 1/4" NPT
10	1	COMPOUND GUAGE, 30 LBS-O-30PSI
11	1	OSCILLATION CHAMBER
12	1	PLUG & CHAIN, 3/8"
13	1	QUICK COUPLING, 3/8"
14	1	QUICK COUPLING, THRD. 1/2"
15	1	BALL VALVE, 1/2" NPT
16	1	BUSHING, 1/2" FNPT x 1" MNPT
17	1	NOT USED
18	1	FLANGE ASSY.
19	1	GUIDE TUBE, 7.8 O.D. x
20	1	CLAMP, LIGHT DUTY, 2 1/2"
21	1	GASKET, 2 1/2"
22	1	PUMP OUT (NOT SHOWN)



1/2" LIQUID ACCESS PORT ASSY. SHOWN (SEE FIG. A) FOR ADDITIONAL LIQUID ACCESS PORT CONFIGURATIONS ARE AVAILABLE.

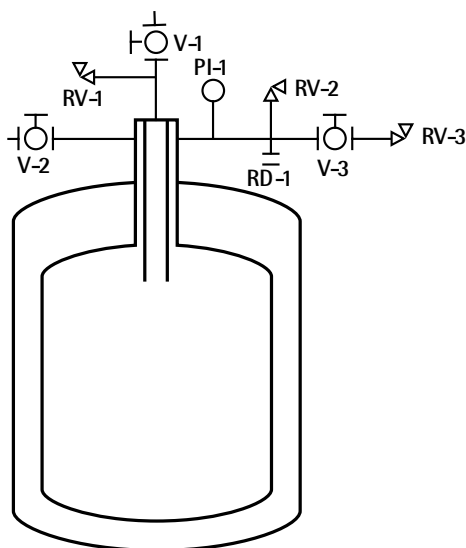


**Cryovac**  
L.P. DEN. N.J. 07036

MULTISHIELDED LIQUID HELIUM/5  
DEWAR 150 LITER CAPACITY

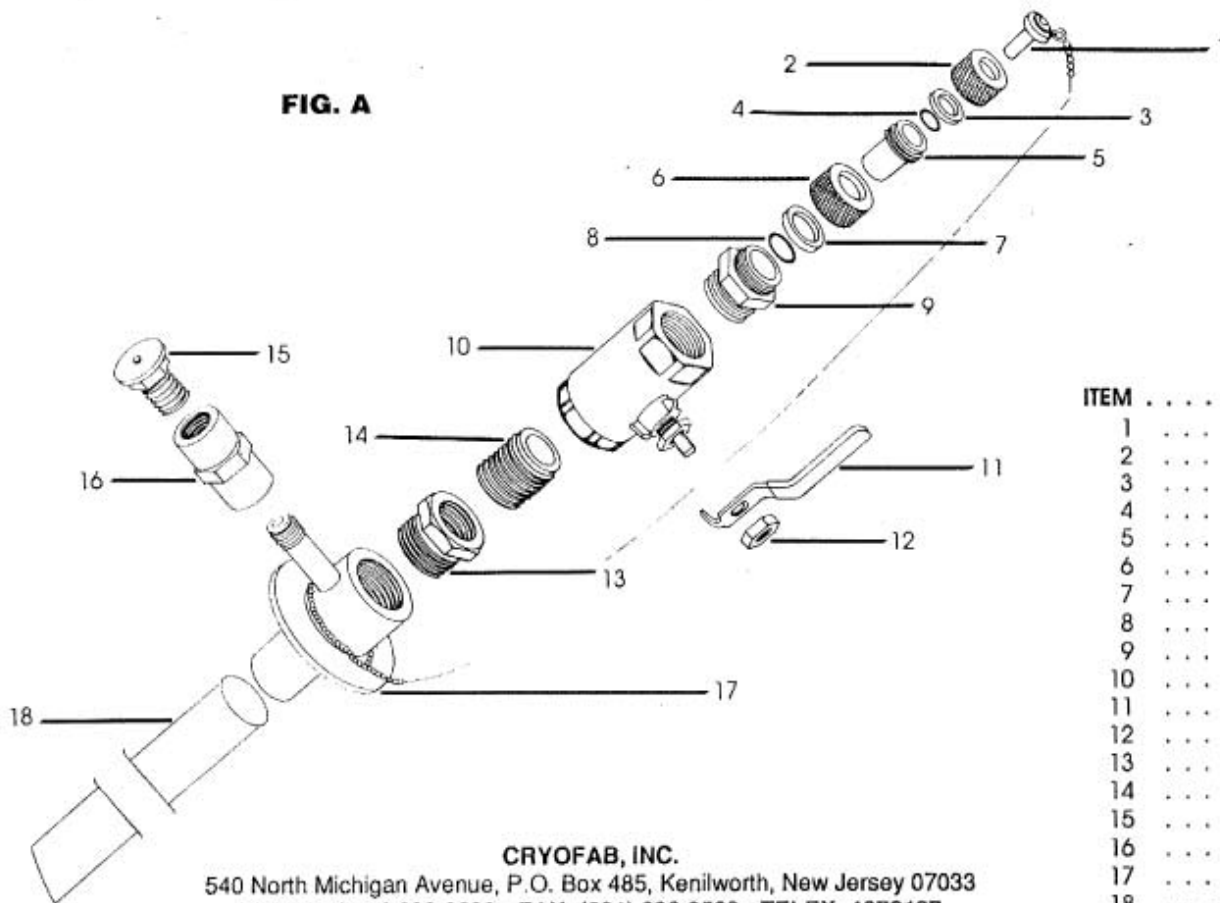
EWSB	APPROVED	REVISIONS	NTS	CM5H-1
------	----------	-----------	-----	--------

### Piping Schematic



### 1/2" Liquid Access Port Assembly (for vessel capacities of 150 liters and less)

FIG. A



ITEM	DESCRIPTION
1	3/8" PLUG & CHA
2	3/8" NUT
3	3/8" FERRULE
4	3/8" O-RING
5	3/8" BODY
6	1/2" NUT
7	1/2" FERRULE
8	1/2" O-RING
9	1/2" BODY
10	1/2" BALL VALV.
11	HANDLE
12	NUT
13	BUSHING
14	1/2" CLOSE NIPPL.
15	1/2" RELIEF VALV.
16	1/2" COUPLING
17	FLANGE ASSEMBLY
18	7/8" OD GUIDE

CRYOFAB, INC.

540 North Michigan Avenue, P.O. Box 485, Kenilworth, New Jersey 07033  
 PHONE: (201) 686-3636 • FAX: (201) 686-9538 • TELEX: 4972137