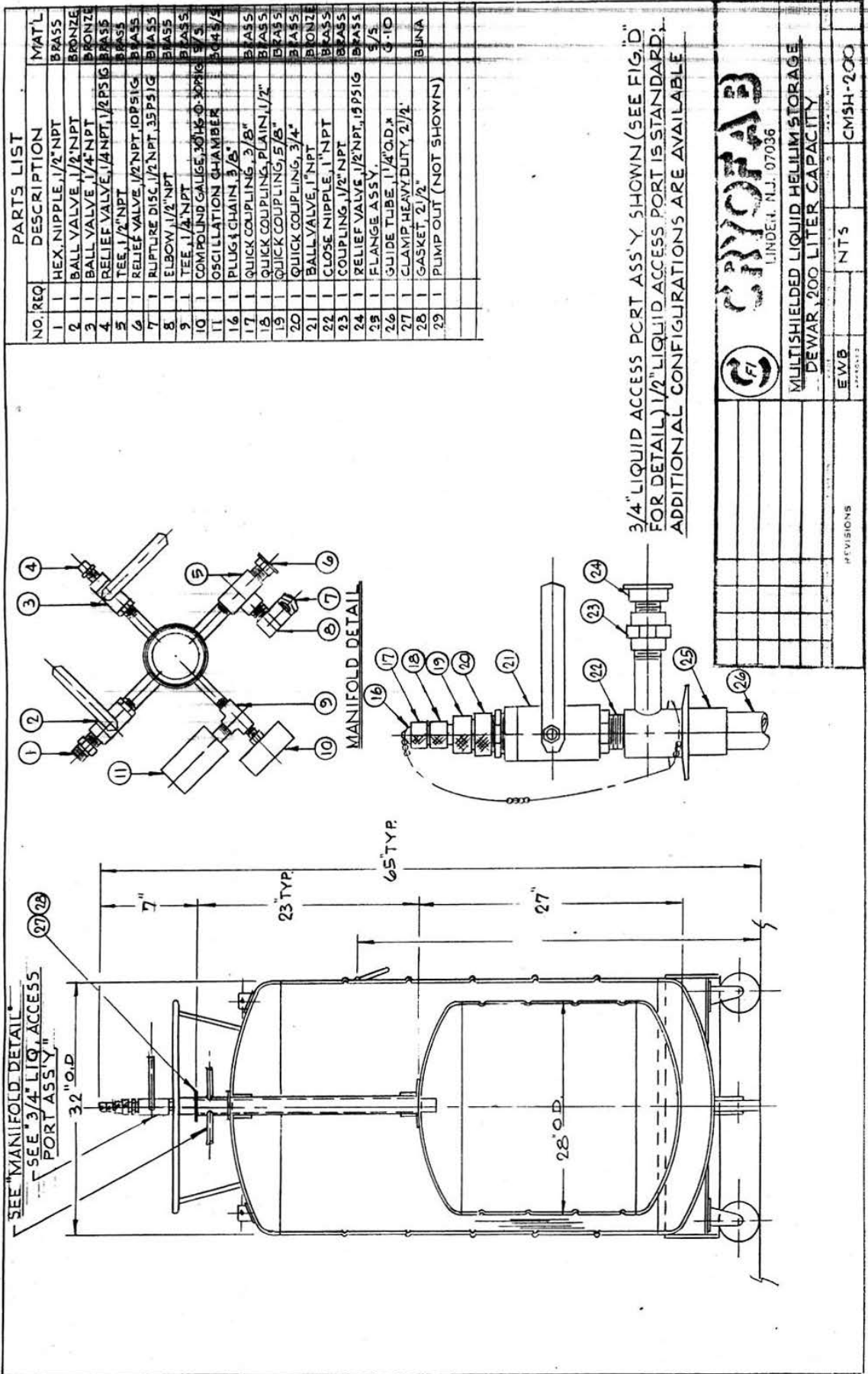




## CMSH 200 Calibration

in.	liters
1	1.4
2	5.2
3	11.1
4	18.6
5	27.3
6	36.8
7	46.7
8	56.7
9	66.7
10	76.7
11	86.7
12	96.6
13	106.6
14	116.6
15	126.6
16	136.6
17	146.6
18	156.5
19	166.5
20	176.5
21	186.4
22	196.0
23	204.7
24	212.2
25	218.0
26	221.9
27	223.2

cm	liters	cm	liters
1	0.2	36	118.3
2	0.9	37	122.3
3	1.9	38	126.2
4	3.3	39	130.1
5	5.0	40	134.0
6	7.1	41	138.0
7	9.5	42	141.9
8	12.1	43	145.8
9	14.9	44	149.8
10	18.0	45	153.7
11	21.3	46	157.6
12	24.8	47	161.6
13	28.4	48	165.5
14	32.1	49	169.4
15	35.9	50	173.3
16	39.7	51	177.3
17	43.6	52	181.2
18	47.6	53	185.1
19	51.5	54	188.9
20	55.4	55	192.7
21	59.4	56	196.4
22	63.3	57	199.9
23	67.2	58	203.3
24	71.2	59	206.5
25	75.1	60	209.5
26	79.0	61	212.3
27	82.9	62	214.8
28	86.9	63	217.0
29	90.8	64	218.9
30	94.7	65	220.5
31	98.7	66	221.8
32	102.6	67	222.7
33	106.5	68	223.1
34	110.5		
35	114.4		



PARTS LIST		
NO. REQ	DESCRIPTION	MAT'L
1	HEX NIPPLE, 1/2" NPT	BRASS
2	BALL VALVE, 1/2" NPT	BRONZE
3	BALL VALVE, 1/4" NPT	BRONZE
4	RELIEF VALVE, 1/4" NPT, 1/2" PSIG	BRASS
5	TEE, 1/2" NPT	BRASS
6	RELIEF VALVE, 1/2" NPT, 10 PSIG	BRASS
7	RUPTURE DISC, 1/2" NPT, 35 PSIG	BRASS
8	ELBOW, 1/2" NPT	BRASS
9	TEE, 1/4" NPT	BRASS
10	COMPOUND GALIGE, 30146-0-30218	5/8"
11	OSCILLATION CHAMBER	5/4 1/2"
16	PLUG & CHAIN, 3/8"	BRASS
17	QUICK COUPLING, 3/8"	BRASS
18	QUICK COUPLING, PLAIN, 1/2"	BRASS
19	QUICK COUPLING, 5/8"	BRASS
20	QUICK COUPLING, 3/4"	BRASS
21	BALL VALVE, 1" NPT	BRONZE
22	COUPLING, 1/2" NPT	BRASS
23	RELIEF VALVE, 1/2" NPT, 19 PSIG	BRASS
24	FLANGE ASSY	3/5"
25	GUIDE TUBE, 1" O.D. x 3/10	3-10
27	CLAMP, HEAVY DUTY, 2 1/2"	BRASS
28	GASKET, 2 1/2"	BRASS
29	PUMP OUT (NOT SHOWN)	

3/4" LIQUID ACCESS PORT ASS'Y SHOWN (SEE FIG. D) FOR DETAIL. 1/2" LIQUID ACCESS PORT IS STANDARD. ADDITIONAL CONFIGURATIONS ARE AVAILABLE.

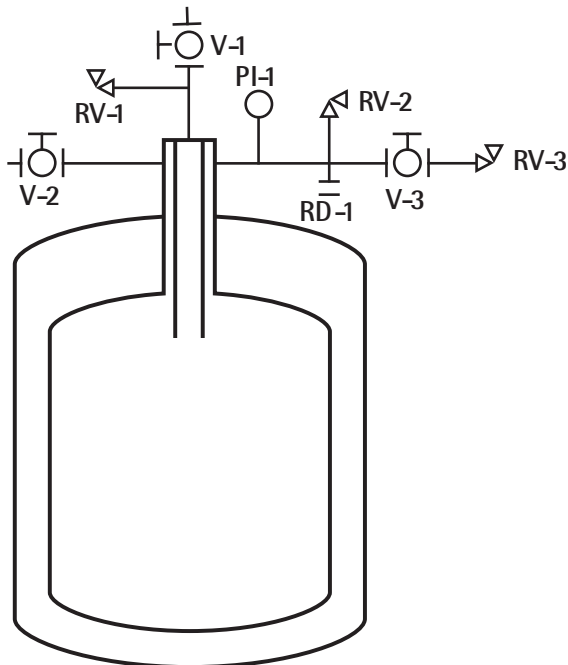
**CRYOFAB**  
LINDER, N.J. 07036

MULTISHIELDED LIQUID HELIUM STORAGE  
DEWAR, 200 LITER CAPACITY

EWB	NTS	CM5H-200
-----	-----	----------

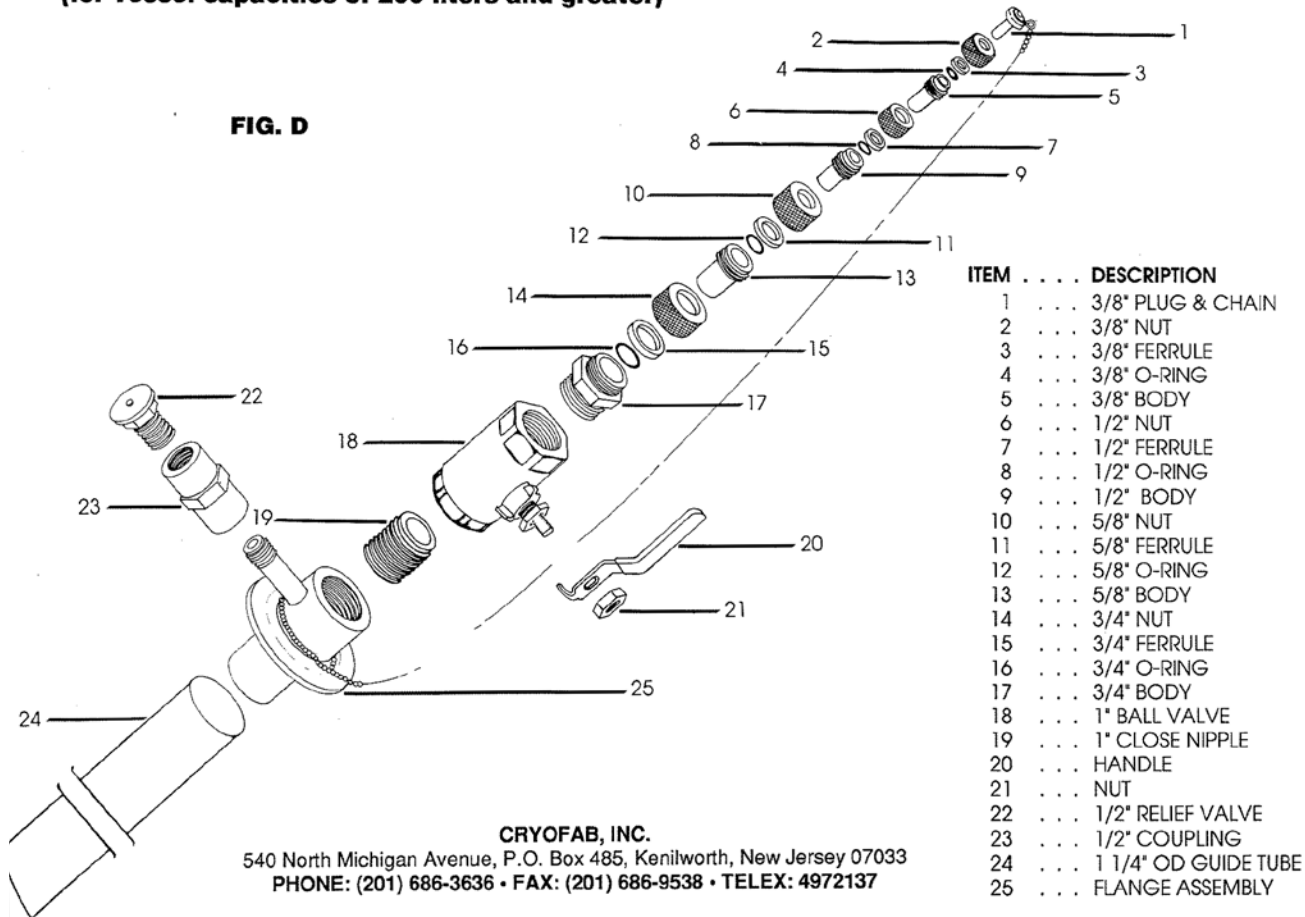
REVISIONS

### Piping Schematic



### 3/4" Liquid Access Port Assembly (for vessel capacities of 200 liters and greater)

FIG. D



CRYOFAB, INC.

540 North Michigan Avenue, P.O. Box 485, Kenilworth, New Jersey 07033  
 PHONE: (201) 686-3636 • FAX: (201) 686-9538 • TELEX: 4972137