



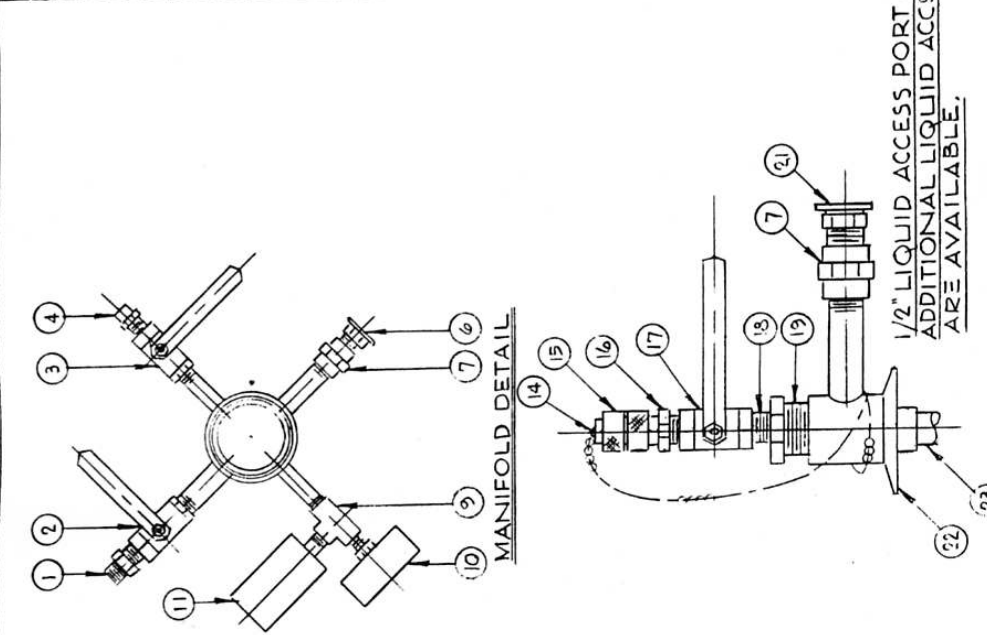
## CMSH 30 Calibration

in.	liters
1	0.8
2	2.7
3	5.5
4	8.7
5	12.0
6	15.2
7	18.5
8	21.7
9	25.0
10	28.2
11	31.0
12	32.9
13	33.7

cm	liters
1	0.1
2	0.5
3	1.0
4	1.8
5	2.6
6	3.7
7	4.8
8	6.0
9	7.2
10	8.5
11	9.8
12	11.1
13	12.3
14	13.6
15	14.9
16	16.2
17	17.5
18	18.7
19	20.0
20	21.3
21	22.6
22	23.9
23	25.2
24	26.4
25	27.7
26	28.9
27	30.0
28	31.0
29	31.9
30	32.6
31	33.2
32	33.5
33	33.7

**PARTS LIST**

NO.	REQ.	DESCRIPTION	MAT
1	1	HEX. NIPPLE, 1/2" NPT	BRAS
2	1	BALL VALVE, 1/2" NPT	BRON
3	1	BALL VALVE, 1/4" NPT	BRON
4	1	RELIEF VALVE, 1/4" NPT, 1/2 PSIG	BRAS
5	1	NOT USED	
6	1	RELIEF VALVE, 1/2 NPT, 10 PSIG	BRAS
7	2	COUPLING, 1/2" NPT	BRAS
8	1	NOT USED	
9	1	TEE, 1/4" NPT	BRAS
10	1	COMPOUND GAGE, 30 KG, 0-30 PSIG	5/5
11	1	OSCILLATION CHAMBER	304L
14	1	PLUG & CHAIN, 3/8"	BRAS
15	1	QUICK COUPLING, 3/8"	BRAS
16	1	QUICK COUPLING, THRD. 1/2"	BRAS
17	1	BALL VALVE, LIQ, 1/2" NPT	BRAS
18	1	CLOSE NIPPLE, 1/2" NPT	BRAS
19	1	BUSHING, 1/2" FNPT x 1" MNPT	BRAS
20	1	NOT USED	
21	1	RELIEF VALVE, 1/2" NPT, 15 PSIG	BRAS
22	1	FLANGE ASSY.	5/5
23	1	GUIDE TUBE, 7.80 O.D. x	5-16
24	1	CLAMP, LIGHT DUTY, 2 1/2"	BLN
25	1	BASKET, 2 1/2"	BLN
26	1	PLUMP OUT (NOT SHOWN)	



1/2" LIQUID ACCESS PORT ASSY. SHOWN (SEE FIG. A) FOR DET  
ADDITIONAL LIQUID ACCESS PORT CONFIGURATIONS  
ARE AVAILABLE.

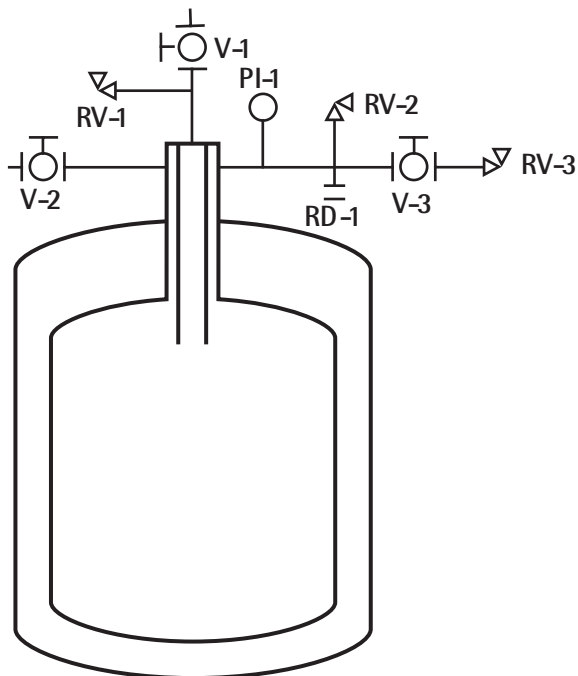
**Cryotab**  
LAWRENCE, N.J. 07036

**MULTISHIELDED LIQUID HELIUM STORAGE  
DEWAR, 30 LITER CAPACITY**

<b>EWB</b>		<b>NTS</b>	<b>CM5H-30</b>
------------	--	------------	----------------

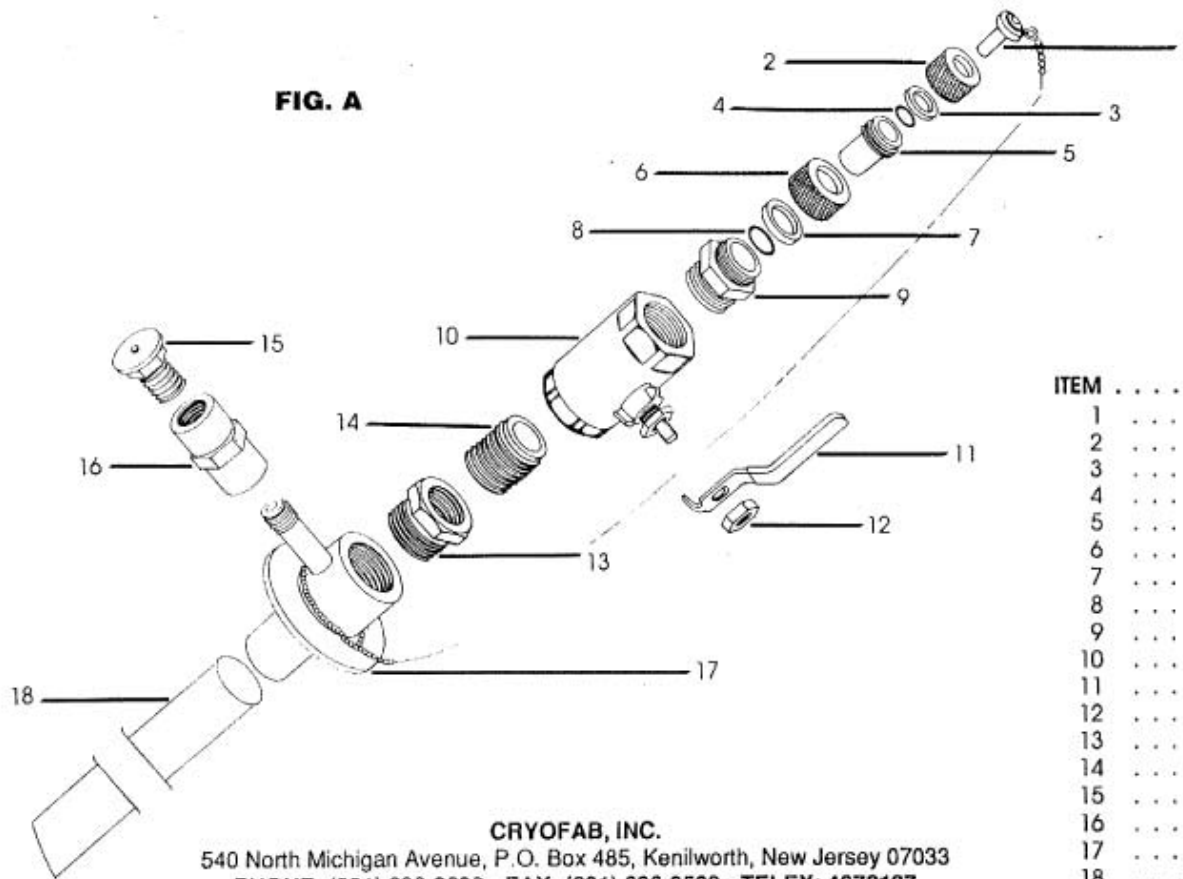
REVISIONS

### Piping Schematic



### 1/2" Liquid Access Port Assembly (for vessel capacities of 150 liters and less)

FIG. A



ITEM	DESCRIPTION
1	3/8" PLUG & CHA
2	3/8" NUT
3	3/8" FERRULE
4	3/8" O-RING
5	3/8" BODY
6	1/2" NUT
7	1/2" FERRULE
8	1/2" O-RING
9	1/2" BODY
10	1/2" BALL VALV.
11	HANDLE
12	NUT
13	BUSHING
14	1/2" CLOSE NIPPL.
15	1/2" RELIEF VALV.
16	1/2" COUPLING
17	FLANGE ASSEMBLY
18	7/8" OD GUIDE

CRYOFAB, INC.

540 North Michigan Avenue, P.O. Box 485, Kenilworth, New Jersey 07033  
 PHONE: (201) 686-3636 • FAX: (201) 686-9538 • TELEX: 4972137